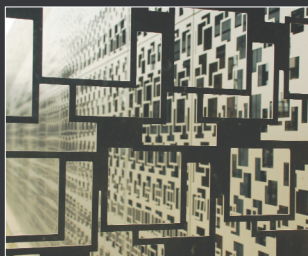


DATABASE

TOWN HALL HOTEL & APARTMENTS



AS A PRACTICAL testing ground for a parameter-based design process and development this project also led us to question its limitations. The sustaining idea of parametric design rests in a conceptual approach to an integrated design as much as it suggests the use of specific modelling and fabrication tools.

Here, geometric manipulation translates combinations and variations of performance driven inputs while generating unique architectural qualities. In the case of the extension's skin, which offers diverse parameters of light, views and privacy, the project defined its own formal grammar, preserving traces of the historical fabric while delineating a distinctive response to its context.

Allowing for a greater and richer adaptation, this advanced design process contains a degree of specificity, which does not fully translate in the production phase where, despite advanced production tools, a certain amount of recurrence is still economically sought at the machine's programming level.

These limitations were reflected in different elements and phases of our work. At each stage, the evaluation process remains subject to the designer's perceptive input, which maintains the project's conceptual coherence. Originating from an entirely bespoke design, the revision of a small portion multiplies into good economies of time and budget.

This illustrates the inherent logic of such a design methodology, which allows for a revision of complex elements at any stage of the process, to integrate inputs of a different nature such as production time, material constraints.

Rare Architects

KEY TO DIAGRAMS

- 1: Conference hall
- 2: Meeting rooms
- 3: Grand stair 1939
- 4: Grand stair 1910
- 5: Office
- 6: Studio
- 7: Apartment
- 8: Hotel room
- 9: Feature room
- 10: Perforated metallic skin (veil)
- 11: 1910 frontage
- 12: Cambridge Heath Road
- 13: 1939 entrance

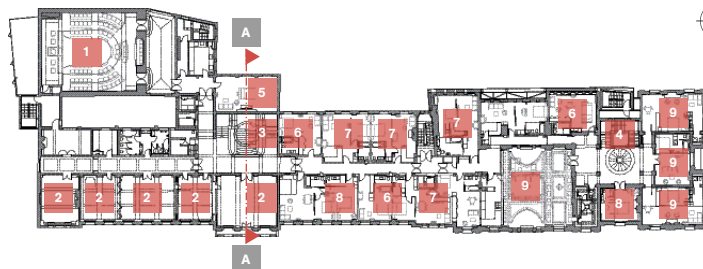
CREDITS

- Architect** RARE Architecture
Client Mastelle
Structural engineer O'Connor Sokolowski Partnership LLP
M&E consultant Mendick Waring Ltd
Quantity surveyor Barrie Tankel Partnership
Historic consultant Priory Heritage
Planning supervisor Prospect Planning
Lighting consultant Jonathan Coles Lighting
Main contractor MP Brothers Ltd

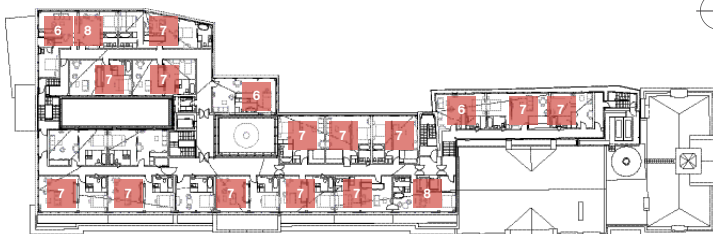
SPEC

- Structure** Promet
Curtain wall Schueco
Extension + Skin Euroclad
Lights Viabizzuno, Modular, Deltalights, iGuzzini, Flos
Solid surface Corian
Coating Alesta
Furniture Fiske
Repair and restoration in rare stone The Scagliola Company
Plaster restoration Plasterite Ltd
Acoustic enclosures Environ
Kitchens HATT
Furniture Fiske
Crittall windows Westleigh
Windows Shueco
Sanitaryware Dornbracht, Duravit, Victoria and Albert
Curtains and blinds Philip Cowans
Ironmongery Randi

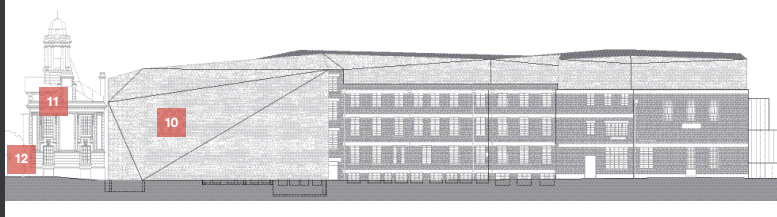
FIRST FLOOR



THIRD FLOOR



SOUTH ELEVATION



SECTION A-A



IN NUMBERS: 8,900m² internal area, 970 m² panels on facade, 102 standard panels, 90 original doors, 9 hotel rooms, 25.4m² smallest room, £290 per night, 89 apartments, 220m² largest apartment, £2,500 per night, 15m pool